



WASH AND DRY IN ONE GO. OR JUST STEAM REFRESH

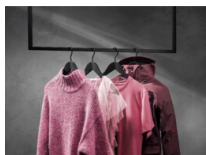
The 7000 ProSteam® Washer Dryer is a 3-in-1 laundry machine that streamlines the laundry process for you with wash, dry, and steam programmes. Steam uses 96% less water*, and is gentler than washing, helping clothes look their best for longer.

Product Benefits & Features

Garments refreshed*, wrinkles reduced with steam refresh

Steam Refresh neutralises odours* and reduces wrinkles on garments, including delicates, in just 25 minutes, all without washing. And if you would like an extra boost of freshness, just add our aromatic steam fragrance, for that just washed freshness.

- Cotton Programmes
- Synthetic Programmes
- Delicate Programmes
- Wool Plus Programme
- Easy iron programme
- Stain Action Option
- Sensitive Option
- Aqua Control and Alarm
- Automatic Child Safety



Specialcare wash-to-dry. customised care even for wool and delicates

SpecialCare Wash-to-Dry adapts to each fabric type for gentle yet effective cleaning. This Woolmark Blue certified machine, washes and dries everyday items, delicates, and wool. It also restores the water protection of your outdoor garments.



Preciseload— adapts energy and water usage to the load size

ProSense+ automatically adapts the cycle time, along with energy and water usage, in proportion to the size of the laundry load. So, you get customised laundry cycles that save energy and water when washing and drying smaller loads.

Mixload saves you time. effectively cleans clothes

MixLoad adjusts energy usage and drying time based on load weight when cleaning daily mixed loads. MixLoad washes clothes at 30°C and in just 69 minutes. Go with MixLoad for optimal performance, and effectively cleaned clothes.

The smooth care drum pattern is even gentler on your fabrics*

The Care drum lets garments glide smoothly thanks to its elevated cushion-like drum pattern and optimised lifter paddle. A thin film of water covers the holes during washing. Providing your fabrics with an even gentler laundry experience.

Product Specification

Washing Capacity (Kg)	9	Woolmark	Woolmark Blue + WoolCare
Drying Capacity (kg)	6	Noise (dB)	Ariel/Lenor
Energy Rating	A	Remaining Moisture (%)	76
Energy Rating (Wash&Dry)	D	ProdPartCode	0
Program List	Eco 40-60, Cottons, Synthetics, Delicates, Wool\Handwash, OutDoor, Machine Clean, Quick 20 Wash&Dry 60, MixLoad, Hygiene, Rinse, Spin/Drain	Plug or Hardwired	All Open
		Push Button Functions	UK Moulded Plug On/Off, Temperature, Spin, Stains/PW, Finish in, Auto Dry, Time dry, Wash mode, Dry mode, Steam mode, Time Save, Start/Pause
Max Spin Speed (rpm)	1600	Noise Rating	B
Energy Consumption per 100 wash cycles (kWh)	49		
Energy Consumption per 100 wash/dry cycles (kWh)	307		
Drum Volume (L)	69		
Motor System	Permanent Magnet		
Dimensions (mm) (HxWxD)	847x597x631		
Depth Max (mm)	660		
Wheels/Feet	4 adj feet		
Cord Length (m)	1.7		
Inlet Hose Length (cm)	150		
Outlet Hose Length (cm)	140		
Total Electricity Loading (W)	2100		
Voltage (V)	230-240		
Required Fuse (A)	13		
Frequency (Hz)	50		

PSGBWD220DE00002

